

Canyon Copper Expands Cameron Cobalt Project

- **Claim block increase 16-fold from 16 hectares to 1,024 hectares**
- **100% purchase, no royalty**

Vancouver, British Columbia, January 15, 2018 - **Canyon Copper Corp. ("Canyon") (TSX-V: CNC)** is pleased to announce that Canyon has acquired additional claims surrounding the company's 100% Cameron Cobalt Project located in Brigstocke Township approximately 20 kilometers southwest of Cobalt, Ontario and 120 kilometers north of North Bay, Ontario.

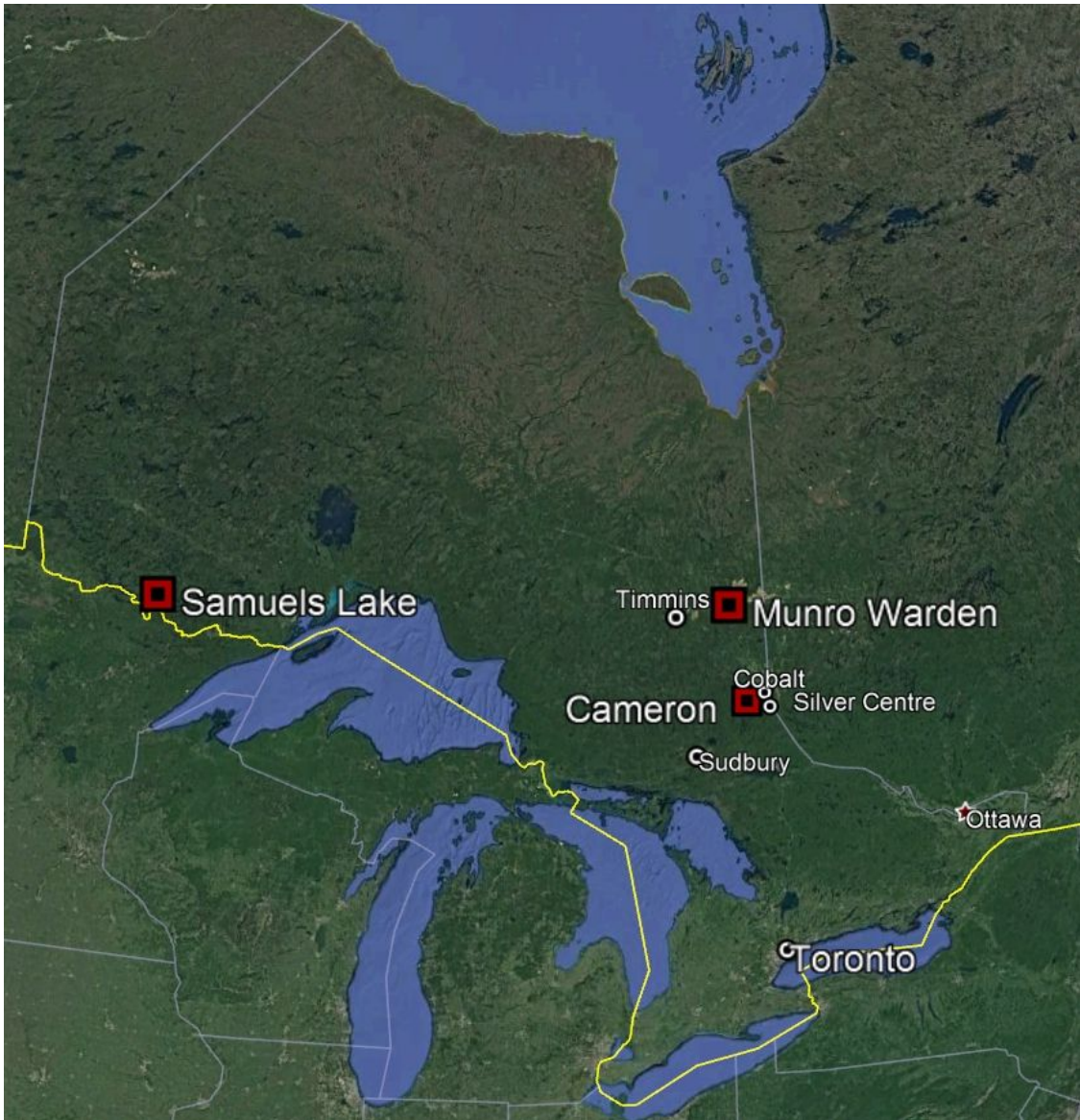
The new claims consist of 60 claim units covering an area of 960 hectares bringing the total project area to a total of 64 contiguous claim units covering 1,024 hectares. The new claims surround the original claims and cover the same geology.

The original claims cover the past exploration pits and a shaft of the Cameron target developed in the 1950's which is now closed. A grab sample collected in 1987 from the historical Cameron pits and analyzed by the Ontario Geological Survey returned assay values of 2.26% Co and 1.7 g/t Au. (Data Source is file MDI31M05SW00021 from the Ontario Mineral Deposit Inventory).

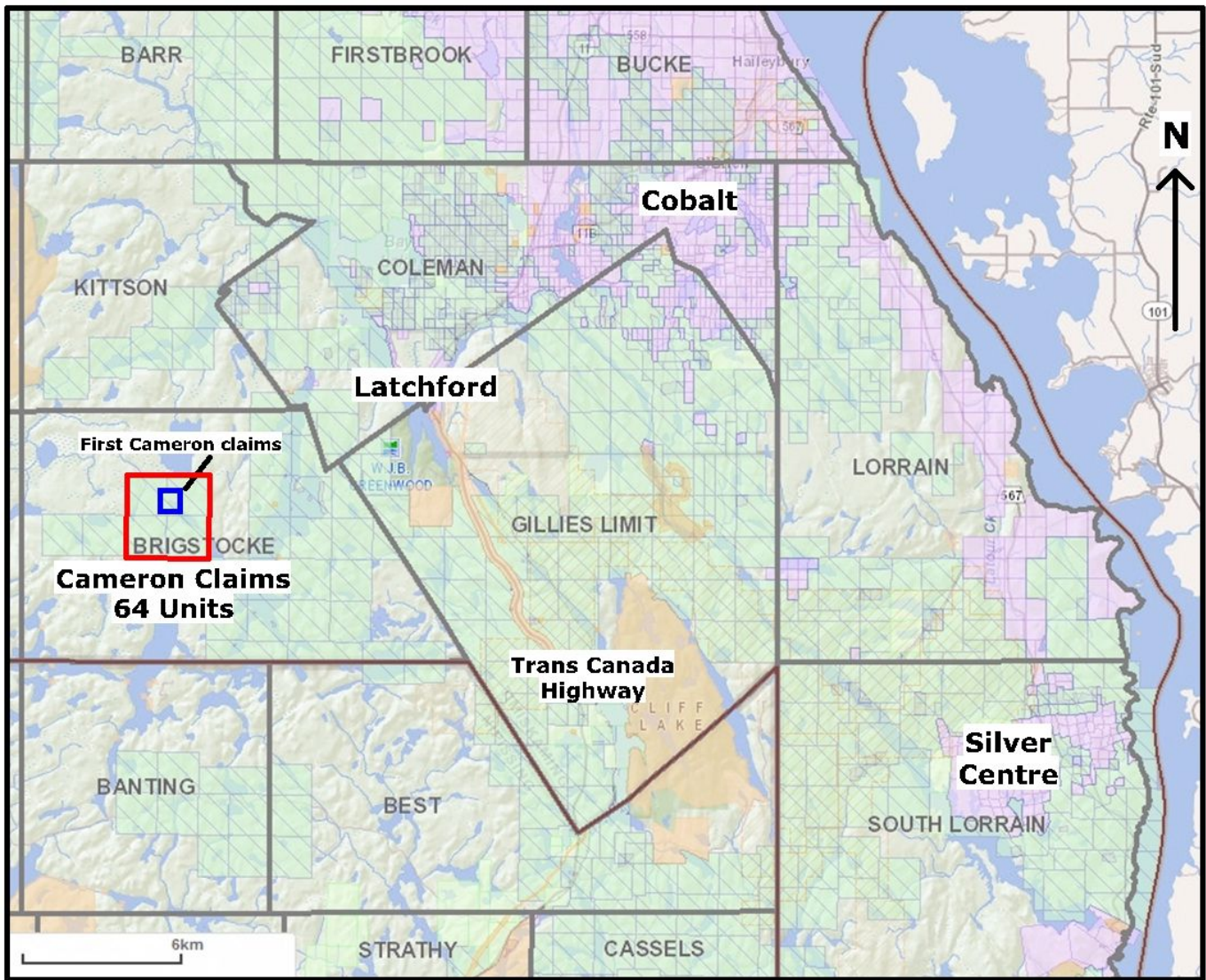
Stephen Wallace, President and CEO of Canyon stated, "This acquisition is in keeping with Canyon's plans to continue to seek quality Cobalt projects throughout Canada. The Cameron project along with Munro-Warden and Samuels Lake will be part of the Company's 2018 summer exploration program."

Geologically the Cameron Cobalt property is located within the Cobalt Embayment in the Southern Province of the Canadian Shield where Huronian Supergroup sedimentary rocks lay unconformably over Archean basement rocks. Both the Huronian sediments and Archean rocks have been intruded by Proterozoic-aged Nipissing diabase occurring as both sills and dykes.

The Cameron property claims covers the contact between the Proterozoic sediments of the Lorrain and Gowganda formation of the Huronian Supergroup and the intrusion of the Nipissing Diabase. The mineralization model for the property is the "Five Element Vein" style of mineralization (Co-Ag-Ni-Bi-As), which is characteristically found with 250m of the diabase contact. This is the characteristic cobalt silver mineralization found throughout the Cobalt and Silver Centre mining camps.



Location Map showing Canyon Copper projects in Ontario



Claim map of Cameron Cobalt Project

Qualified Person

Stephen Wallace, P.Geo., is Canyon's designated Qualified Person within the meaning of National Instrument 43-101 and has reviewed and approved the technical information contained in this news release.

On behalf of the Board of Directors,

“Stephen Wallace”

CANYON COPPER CORP.

Stephen Wallace, President, CEO and Director

Contact: Canyon Copper Corp.
 Investor Relations
 (604) 331-9326
info@canyoncc.com

Cautionary Statement Regarding Forward Looking Information

This News Release may contain, in addition to historical information, forward-looking statements within the meaning of Section 27A of the Securities Act of 1933, as amended, and section 21E of the Securities Exchange Act of 1934, as amended. These forward-looking statements are identified by their use of terms and phrases such as “believe,” “expect,” “plan,” “anticipate” and similar expressions identifying forward-looking statements. Investors should not rely on forward-looking statements because they are subject to a variety of risks, uncertainties and other factors that could cause actual results to differ materially from Canyon’s expectations, and expressly does not undertake any duty to update forward-looking statements. These factors include, but are not limited to the following, Canyon’s ability to implement its proposed drill programs on the Bootleg Project, Canyon’s ability to obtain additional financing, uncertainty of estimates of mineralized material and other factors which may cause the actual results, performance or achievements of Canyon to be materially different from any future results, performance or achievements expressed or implied by such forward-looking statements.

Cautionary Note to U.S. Investors Regarding Estimates of Measured, Indicated and Inferred Resources

*This News Release may use the terms “measured”, “indicated” and “inferred” “resources.” We advise U.S. investors that while these terms are recognized and required by Canadian regulations, the SEC does not recognize them. “Inferred resources” have a great amount of uncertainty as to their existence, and great uncertainty as to their economic and legal feasibility. It cannot be assumed that all or any part of an “inferred mineral resource” will ever be upgraded to a higher category. Under Canadian rules, estates of “inferred mineral resources” may not form the basis of a feasibility study or prefeasibility studies, except in rare cases. The SEC normally only permits issuers to report mineralization that does not constitute “reserves” as in-place tonnage and grade, without reference to unit measures. **U.S. investors are cautioned not to assume that any part or all of a measured, indicated or inferred resource exists or is economically or legally mineable.***

NEITHER TSX VENTURE EXCHANGE NOR ITS REGULATION SERVICES PROVIDER (AS THAT TERM IS DEFINED IN THE POLICIES OF THE TSX VENTURE EXCHANGE) ACCEPTS RESPONSIBILITY FOR THE ADEQUACY OR ACCURACY OF THIS RELEASE.